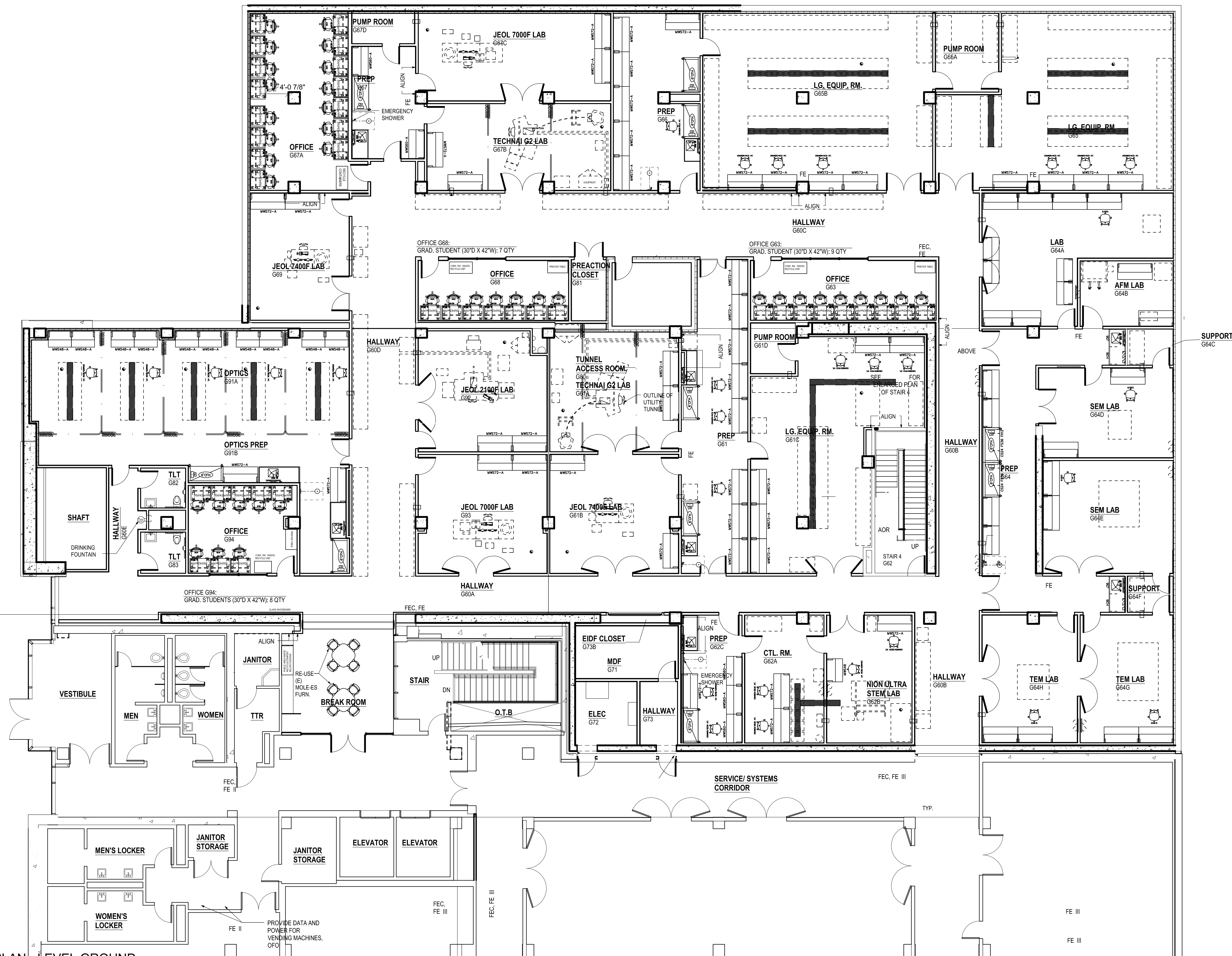


OFFICE G67A:
GRAD STUDENTS (30'D X 42'W): 15 QTY



PHASE II - NANOS

PHASE I - MOLES
(EXISTING)

FURNITURE (30"d X 42"w) PLAN - LEVEL GROUND
UW NANO TECHNOLOGY
SCALE: 1/8" = 1'-0"

FEB. 15, 2017

**NOTE: DO NOT RECOMMEND 30"D X 42"W ADJ. HEIGHT AND BBF MOBILE PEDESTAL.
THERE IS NOT ENOUGH ROOM FOR THE TASK CHAIRS AND PEDESTALS.**